



PREMIER® Series 300/301 Self-Cleaning Residential Gas Water Heaters



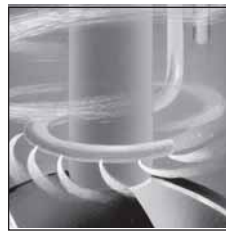
Our high efficiency residential gas water heaters-

This special high efficiency design is the result of 2 Inch thick Foam Insulation, external Silencer™ Heat Traps and an internal tank design that maximizes heat transfer area.

Intelligent Control Logic - The internal microprocessor provides enhanced operating parameters and tighter differentials for precise sensing and faster heating response to optimize performance.

Self-Powered Electronic Gas Valve - Uses a thermopile to generate the power needed to operate the electronic gas control without requiring an external power source.

Diagnostics - The electronic gas control incorporates an LED status indicator that monitors system operation & service diagnostics.



Self-Cleaning Turbo Coil Dip Tube -

Features jet ports that direct incoming cold water to create turbulence that reduces sediment buildup in the tank. This self-cleaning action helps prolong tank life and maintain high energy efficiency.

Blue Diamond® Glass Coating - Provides superior corrosion resistance compared to industry-standard glass lining.

Long-Lasting PEXAN™ Dip Tube - The Turbo Coil is made of PEXAN, a cross-linked PEX polymer that can withstand long-term exposure to water temperatures up to 400° F.

Green Choice® "Eco-Friendly Gas Burner" - Patented design reduces NOx emissions by up to 33% compared to standard burners.

Easy-To-Light Piezo Ignitor - For fast "one hand" pilot ignition.

Durable, Tamper-Resistant Brass Drain Valve

Factory-Installed Side-Mounted CSA Certified ASME Rated T&P Relief Valve - Top-mounted T&P Valve available as option.

Magnesium Anode Rod - Helps protect against corrosion to maximize tank life.



Flammable Vapor Ignition Resistant Compliant Design - See other side.

10-Year Limited Tank and Parts Warranty

For more information on State® contact:
State Water Heaters
500 Tennessee Waltz Parkway, Ashland City, TN 37015
800-365-0024 Toll-free USA
www.statewaterheaters.com

SOLID.STATE.



PREMIER® Series 300/301 Self-Cleaning Residential Gas Water Heaters



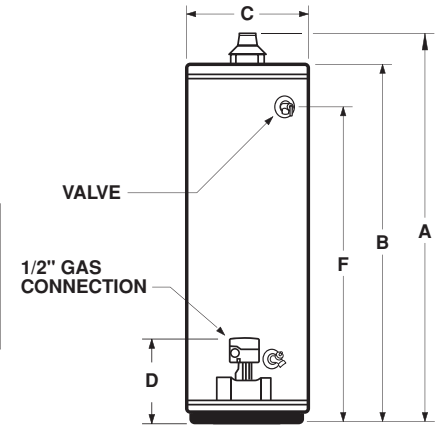
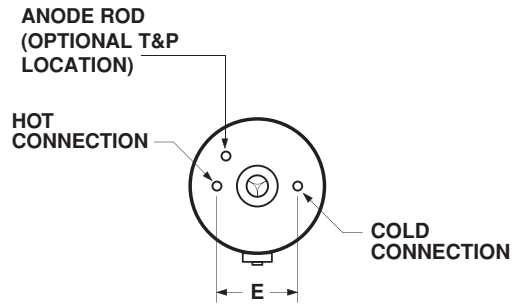
| MODEL NUMBER | PEAK DEMAND OUTPUT (1st Hour Rating Gallons) | ENERGY FACTOR | GAL. CAP. | BTU INPUT PER HOUR NATURAL† | RECOVERY 90°F RISE GALLONS | FOAM THICKNESS (INCHES) | DIMENSIONS IN INCHES | | | | | | | APPROX. SHIPPING WEIGHT (LBS.) |
|--------------------|--|---------------|-----------|-----------------------------|----------------------------|-------------------------|----------------------|--------|----|----|---|--------|-------------------|--------------------------------|
| | | | | | | | A | B | C | D | E | F | DRAFT HOOD OUTLET | |
| TALL MODELS | | | | | | | | | | | | | | |
| GPX 40 YXRT | 70 | .63 | 40 | 40,000 | 41 | 2 | 61-3/4 | 58-1/4 | 20 | 13 | 8 | 51-3/4 | 3 or 4 | 150 |
| GPX 50 YXRT | 88 | .62 | 50 | 40,000 | 41 | 2 | 61 | 57-1/4 | 22 | 13 | 8 | 50-1/4 | 3 or 4 | 165 |

Recoveries are rounded to nearest gallon
 Water Connections – 3/4" on all models
 † Propane Gas – 36,000 BTU Input on 40 gallon model and 37,000 BTU Input on 50 gallon model
 When ordering Propane, change "Y" to "H" in model number (GPX 40 HXRT)
 When ordering top-mounted T&P Valve, add "G" to model number (GPX 40 YXRT G)

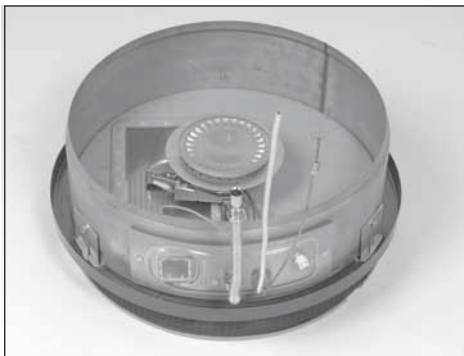
Flammable Vapor Ignition Resistant (FVIR) Water Heaters

State FVIR design meets the American National Standards Institute standards (ANSI Z21.10.1 - CSA 4.1) that deal with the accidental or unintended ignition of flammable vapors, such as those emitted by gasoline.

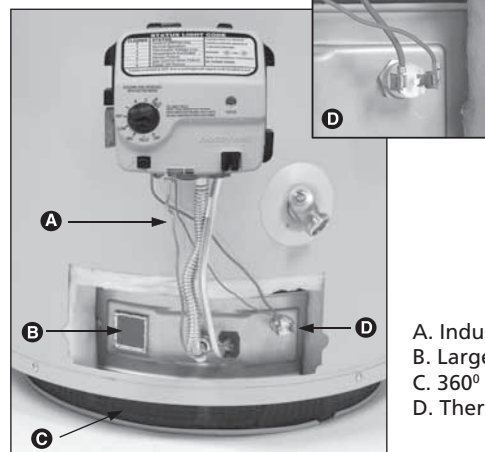
Features a sealed combustion chamber with air intake filter and a flame arrestor built into the water heater base. In addition, a thermal cutoff (TCO) device, is designed to shut off gas flow to the burner and pilot if poor combustion is detected.



Maximum Hydrostatic Working Pressure: 150 PSI



If flammable vapors accidentally enter the combustion chamber, the arrestor is designed so flames burn off the top surface and can not escape down through the arrestor.



- A. Industry standard thermopile
- B. Large View Port for easy burner inspection
- C. 360° combustion air filter
- D. Thermal Cutoff (TCO) with manual reset

For complete information on limited warranties, consult written warranty, or contact the State Customer Care Center, 1-800-365-0024.

State Industries, Inc. reserves the right to make product changes or improvements without prior notice.

For more information on State® contact:
 State Water Heaters
 500 Tennessee Waltz Parkway, Ashland City, TN 37015
800-365-0024 Toll-free USA
www.statewaterheaters.com

SOLID.STATE.

