

SELECT[®] MANUFACTURED HOUSING

Standard Vent and Direct Vent Gas Water Heaters



Complies with HUD Standards for Manufactured Housing Installation. Design-Certified by CSA International -

Meets the Federal Energy Efficiency Standards effective January 20, 2004, according to the National Appliance Energy Conservation Act (NAECA) of 1992

Standard Vent Models are FVIR Compliant

Gas Control Is Convertible for Natural and Propane Gas Applications

For flexibility to meet the varying needs of Manufactured Housing installations. Heater ships from the factory set up for natural gas and a complete LP burner assembly ships loose with the heater for easy LP gas conversions

Side-Mounted 3/4" Cold Water Inlet - For ease of installation when cold water supply originates below the structure. Top-mounted 3/4" hot water outlet.

Direct Vent Models Packaged with Bottom Intake Air Vent -

To draw all combustion make-up air from outside the structure.

Optional Ducted Air Inlet Kit for Direct Vent Models - For use when water heater is installed over a basement. Provision for horizontal air inlet ducting up to 30 feet, using Schedule 40 PVC pipe. Kit includes 45° rodent-proof termination cap and wall collars. Kit #9002986005 for 30 and 40-gallon models. Kit #9002987005 for 50-gallon models.

Approved Roof Jack Kits Required for Installation of Direct Vent Models -

Four kits available to accommodate vertical vent distances from 12" to 96" (see back of sheet).

Green Choice[®] Eco-Friendly Gas Burner - Patented design reduces NO_x emissions by up to 33% and complies with air quality management districts with similar requirements for low NO_x emissions.

Glasslined Tank - Protects the tank from corrosion.

Anode Rod - Maximizes tank life.

CSA Certified and ASME Rated T&P Relief Valve

Maximum Hydrostatic Working Pressure 150 PSI

6-Year Tank and 2-Year Limited Parts Warranty



For more information on State Select[®] contact:
State Water Heaters
500 Tennessee Waltz Parkway, Ashland City, TN 37015
800-365-0024 Toll-free
www.statewaterheaters.com

SOLID.STATE.



SELECT[®] MANUFACTURED HOUSING

StandardVent and DirectVent Gas Water Heaters

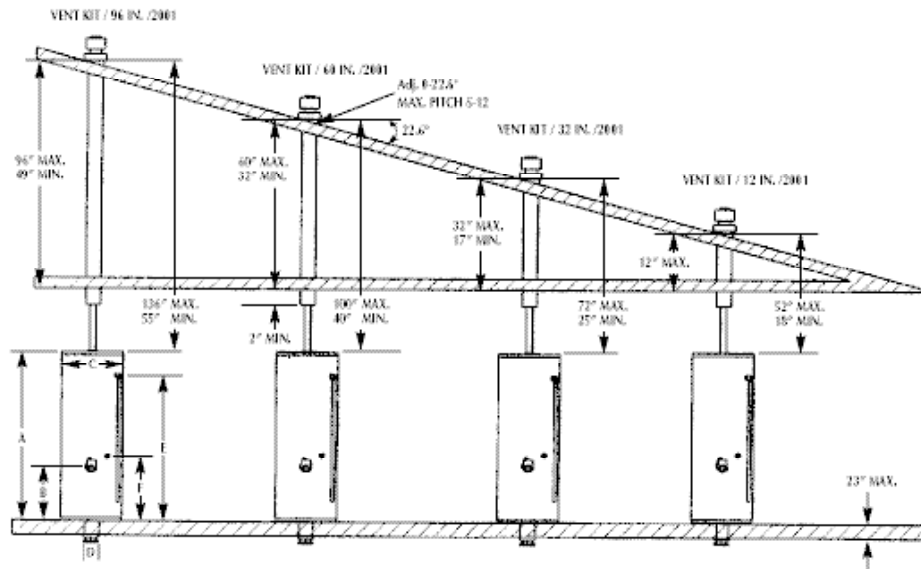
MODE NUMBER	SERIES	PEAK DEMAND OUTPUT (1ST Hour Rating)	ENERGY FACTOR	GAL. CAP.	BTU INPUT PER HOUR NATURAL/PROPANE	RECOVERY 90° F RISE GALLONS	INSULATION (Inches)	DIMENSIONS IN INCHES							APPROX. SHIPPING WEIGHT (LBS.)
								A	B	C	D	E	F	DRAFT HOOD OUTLET	
STANDARD VENT MODELS – See Figure 2															
GS6 30 YOMT	300	52	0.63	30	35,500/32,000	36	2	61-1/2	58	20	12-1/4	14-1/4	51-3/4	3-4	125
GS6 40 YOMT	300	62	0.59	40	35,500/35,500	36	2	61-3/4	58-1/4	20	12-1/4	14-1/4	51-3/4	3-4	140
DIRECT VENT MODELS (ORDER ROOF JACK KIT SEPARATELY) – See Figure 1															
PR6 30 NHDST2	102	54	0.61	30	30,000	31	2	–	56	18	15-1/4	16-3/4	51-1/2	3-1/2	115
PR6 40 NHDST2	102	64	0.59	40	32,000	33	2	–	56-1/2	20	15-1/4	20-3/4	51	3-1/2	134
PR6 50 NHDST2	102	77	0.58	50	38,000	39	2	–	56	22	15-1/4	23-1/4	50-1/2	4-1/2	170

Direct Vent model are not FVIR Compliant Recoveries are rounded to nearest gallon.



Approved Roof Jack Kits for Direct Vent Models

Direct Vent Manufactured Housing water heaters must be installed using one of these approved Roof Jack Kits, which must be ordered separately. "Min." and "Max." dimensions indicate kit adjustability for varying vent distances, as shown in drawing.

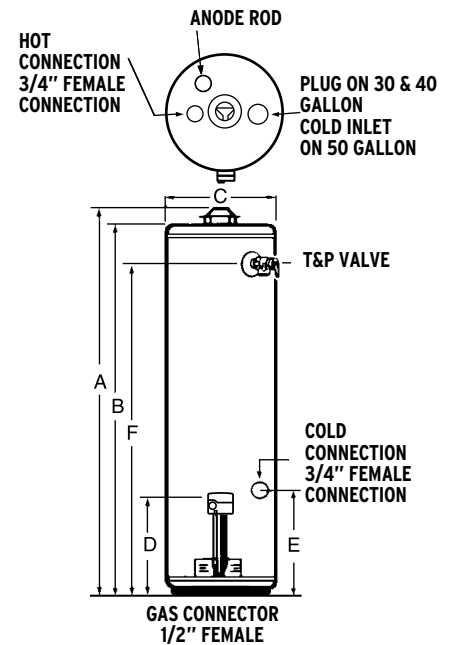


Direct Vent Models (Figure 1)

For complete information on limited warranties, consult written warranty, or contact the State Customer Care Center, 1-800-365-0024.

State Industries, Inc. reserves the right to make product changes or improvements without prior notice.

KIT NUMBER	MIN.	MAX.	SHIP. WEIGHT
9002964005	–	12"	10 lbs.
9002965005	17"	32"	13 lbs.
9002966005	32"	60"	27 lbs.
9002967005	49"	96"	22 lbs.



Standard-Vent Models (Figure 2)

For more information on State Select[®] contact:
 State Water Heaters
 500 Tennessee Waltz Parkway, Ashland City, TN 37015
 800-365-0024 Toll-free
 www.statewaterheaters.com

SOLID.STATE.

