

SELECT® DIRECT VENT RESIDENTIAL GAS



Image Shown:
GS6 40 YBDS, GS6 50 YBDS,
GS6 50 YRDS
Series 290/291

*GS6 75 YRDS will have leg base assembly



Direct Vent Design

- One-pipe, dual-channel draws all make-up air from outside the home, eliminating problems caused by insufficient indoor ventilation. All units are FVIR compliant.
- Horizontal air intake and venting on all models up to 80 inches from the outside wall with no electrical power needed

Intelligent Control Logic

- The internal microprocessor provides enhanced operating parameters and tighter differentials for precise sensing and faster heating response to optimize performance

Self-Powered Electronic Gas Valve

- Uses a thermopile to generate the power needed to operate the electronic gas control without requiring an external power source

Diagnostics

- The electronic gas control incorporates an LED status indicator that monitors system operation and service diagnostics

Durable Tamper-Resistant Brass Drain Valve

CODE COMPLIANCE - UBC, CEC, SBCC, HUD and BOCA National Codes. Meets the thermal efficiency and standby loss requirements of the U.S. Department of Energy and current edition of ASHRAE/IESNA 90.1. and meets the Federal Energy Efficiency Standards effective January 20, 2004, according to the National Appliance Energy Conservation Act (NAECA) of 1992.

DESIGN-CERTIFIED BY CSA INTERNATIONAL

According to ANSI Z 21.10.1- CSA 4.1 Standards governing storage-type water heaters.

Diffuser Dip Tube

- Helps reduce lime and sediment buildup, maximizes hot water output. Made of State PEXAN™, a cross-link PEX polymer

Green Choice® Gas Burner

- Patented “Eco-Friendly” design reduces NOx emissions up to 33% and complies with requirements for low NOx emissions of less than 40 ng/J

Glass Lined Tank

- Provides superior corrosion resistance compared to the industry-standard glass lining

Push Button Piezo Ignitor

- Makes lighting the pilot fast and easy with one hand push button spark ignition

CoreGar™ Anode Rod

- Our anode rods have a stainless steel core that extends the life of the anode rod allowing superior tank protection far longer than standard anode rods.

Factory-Installed Temperature & Pressure (T&P) Relief Valve

Thick, CFC-Free Foam Insulation

6-Year Limited Tank and Parts Warranty

For more information on Select® Direct Vent contact:

State Water Heaters
500 Tennessee Waltz Parkway
Ashland City, TN 37015
1-800-365-0024 Toll-free USA
www.statewaterheaters.com

SOLID.STATE.



SELECT® DIRECT VENT RESIDENTIAL GAS

MODEL NUMBER	SERIES	GALLON CAPACITY	ENERGY FACTOR (EF)	BTU INPUT PER HOUR NATURAL	RECOVERY 90°F RISE	FIRST HOUR RATING	DIMENSIONS IN INCHES								VENT OUTLET*	APPROX. SHIPPING WEIGHT (LBS)
							A	B	C	D	E	F	G	H		
GS6 40 YBDS	290	40	0.60	38,000	41	72	64	49-3/4	22	13-1/4	15-1/4	42-1/2	29	15-1/4	Co-Axial	178
GS6 50 YBDS	290	50	0.59	40,000	43	91	73	59	22	13-1/4	15-1/4	51-3/4	29	15-1/4	Co-Axial	200
GS6 50 YRDS	290	50	0.58	47,000	50	92	74	60	22	13-1/4	15-1/4	52-3/4	29	15-1/4	Co-Axial	215
GS6 75 YRDS	200	75	0.57	55,000	58	131	76	63-1/4	26-1/4	15-1/2	17-1/4	54	33-3/4	17-1/4	Co-Axial	310

Recovery capacities based on actual performance tests.
 * Dual-channel system has 3" vent pipe inside 6" air intake pipe, for the 40 & 50-gallon models.
 The 75 gallon model uses a 3" x 7" co-axial pipe.
 All Models Have 2" Foam Cavity.
 Water connection 3/4" male all models.
 75 gallon water connections are 12" on center on center and the 40 and 50 gallon models are 8" on center.
 All models are available in propane (LP) gas. Propane units are Series 291 or 201 for the 75 gallon.
 All models are certified from sea level to 7,700 ft. elevations.
 Side connections optional. Add "L" to the model number, e.g. GS6 40 YBDSL (T&P standard on all models).

Important! Vent Installation and Termination Requirements

- Maximum horizontal vent distance is 80" to outside of exterior wall.
 - Maximum vertical vent distance is 72" above the heater before 90 degree turn through exterior wall.
 - Minimum horizontal vent distance is 17" to outside of exterior wall.
 - Vent pipes may be trimmed (cut) for short vent installations.
 - The recommended installation height for the vent termination is dimension "A" in the above table.
- The minimum allowable height (center line of termination opening) is 60-3/4" for the 40-gallon model, 69-1/2" for the 50-gallon 40,000 Btu input model, 70-1/2" for the 50-gallon 47,000 Btu input model and the 75 gallon model.

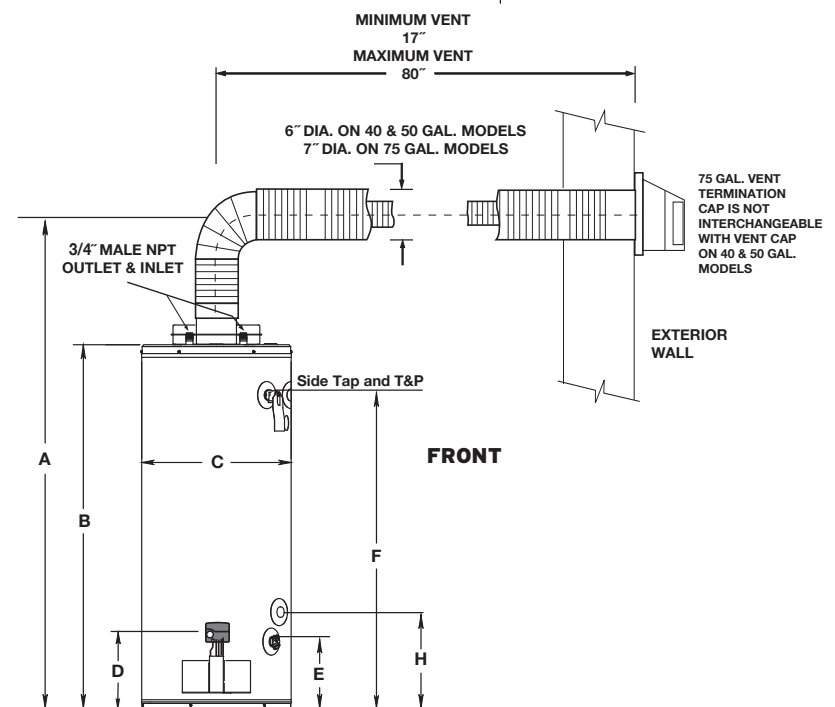
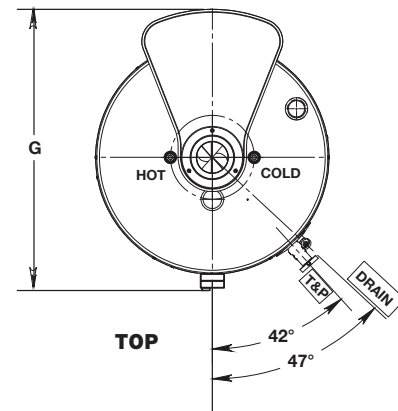
- Vent Restrictor Plate:

The vent restrictor plate is required for short horizontal vent runs, less than 30" horizontal and vent runs when the terminations height is greater than 48" above the heater. The only time the restrictor is not required for horizontal runs greater than 30" in length with the termination less (lower) than 48" above the heater. See installation instructions for complete details.

- Offset Vent Arrangement:

The vent run may have one (1) 90 degree horizontal turn prior to terminating through the exterior wall. See installation instructions for complete details.

- Vent termination clearance hole through the exterior wall should be approximately 7" diameter.
- Snow accumulation and drifting should be considered when locating the termination.
- An optional wire grill vent cap protector is available through the parts department. Request part number 9006627005.
- See the installation manual for complete installation and venting requirements.



For complete information on limited warranties, consult written warranty or contact technical support at 1-800-365-0024. State Industries, Inc., reserves the right to make product changes or improvements without prior notice.

For more information on Select® Direct Vent contact:

State Water Heaters
 500 Tennessee Waltz Parkway
 Ashland City, TN 37015
 1-800-365-0024 Toll-free USA
 www.statewaterheaters.com

SOLID.STATE.

