

SELECT®

Residential Power Vent Gas Water Heaters



State Select® Power Vent 40 and 50-gallon gas water heaters now feature a patented FVIR Compliant design, which meets Phase II of the ANSI Z21.10.1 standards for flammable vapor ignition resistance. A power vent water heater is an excellent alternative for many replacement applications where a conventional vertical vent model is not a practical option and offers versatility for installations of gas water heaters in residential new construction.

Enhanced Power Vent Capabilities

- System allows combined horizontal and vertical vent runs up to 120 equivalent feet with 3" pipe, up to 160 equivalent feet with 4" pipe on 40,000 BTU and 50,000 BTU models
- 40 and 50-gallon models vent using 2", 3" or 4" Schedule 40 PVC, CPVC or ABS pipe
- Supplied with termination screens and elbow
- See next page for complete information on vent capabilities

Intelli-Vent™ Electronic Gas Control

- Silicon nitride hot surface ignitor provides superior durability and eliminates standing pilot
- Advanced design ensures precise control of water temperature; simplifies diagnostics
- Gas connection located on side of control, same as conventional gas control

Diffuser Dip Tube

- Reduces lime and sediment buildup, maximizes hot water output
- Made from PEXAN™, a cross-linked polymer that can withstand long-term exposure to temperatures up to 400°F

Patented Glasslined Tank with Aluminum Anode Rod

- For long-lasting protection against corrosion or sediment buildup

Advanced Power Vent Blower Design

- Equipped with 110/120 volt electrical system (rating 3 amps or less), 6-foot cord with standard 3-prong male connector
- Patented design reduces NOx emissions by up to 33% and meets less than 40 ng/j requirements for low NOx

Durable, Tamper-Resistant Brass Drain Valve

CSA Certified and ASME Rated T&P Relief Valve

Design-Listed by Underwriters Laboratories

- Listed according to ANSI Z21.10.1 - 10.3 - CSA 4.1 - 4.3 standards governing storage-type water heaters
- Code compliance: UBS, CEC, SBCC, CABO, HUD, BOCA National codes. Meets the the thermal efficiency and standby loss requirements of the U.S. Department of Energy and Current Edition of ASHRAE/IESNA 90.1 and Federal Energy Efficiency Standards Effective January 20, 2004, according to the National Appliance Energy Conservation Act (NAECA) of 1992.

Maximum Hydrostatic Working Pressure: 150 psi

FVIR Compliant Gas Water Heater Design

- See other side 6-Year Limited Tank and Parts Warranty
- Consult written warranty or contact State Water Heaters for complete information.



GAS-FIRED



GAS-FIRED



Low Lead Content

For more information on State® contact:
State Water Heaters
500 Tennessee Waltz Parkway, Ashland City, TN 37015
800.365.0024 Toll-free USA
www.statewaterheaters.com

Intelli-Vent™ is a trademark of
Emerson Electric Company

SOLID.STATE.



SELECT®

Residential Power Vent Gas Water Heaters



| MODEL NUMBER | FIRST HOUR RATING GALLONS | ENERGY FACTOR | GALLON CAPACITY | BTU INPUT PER HOUR NATURAL | RECOVERY 90°F RISE GALLONS PER HOUR | R VALUE** | DIMENSIONS IN INCHES | | | | | | APPROX. SHIPPING WEIGHT (LBS) | |
|----------------|---------------------------|---------------|-----------------|----------------------------|-------------------------------------|-----------|----------------------|--------|--------|----|----|--------|-------------------------------|--------------|
| | | | | | | | A | B | C | D | E | F | | VENT OPTIONS |
| GS6 40 YBVIT | 69 | .65 | 40 | 40,000 | 44 | 8 | 63 | 55 | 18-1/2 | 13 | 8 | 49 | 2, 3 or 4 | 157 |
| GS6 50 YBVIT | 83 | .65 | 50 | 40,000 | 44 | 8 | 65 | 56-3/4 | 20 | 13 | 8 | 50-1/4 | 2, 3 or 4 | 177 |
| GS6 40 YBVIT 2 | 70 | .67 | 40 | 40,000 | 44 | 16 | 63 | 55 | 20-1/2 | 13 | 8 | 49 | 2, 3 or 4 | 166 |
| GS6 50 YBVIT 2 | 83 | .67 | 50 | 40,000 | 44 | 16 | 65 | 56-3/4 | 22 | 13 | 8 | 50-1/4 | 2, 3 or 4 | 186 |
| GS6 40 YRVIT | 80 | .65 | 40 | 50,000 | 53 | 16 | 63 | 55 | 20-1/2 | 13 | 8 | 49 | 2, 3 or 4 | 166 |
| GS6 50 YRVIT | 83 | .65 | 50 | 50,000 | 53 | 16 | 65 | 56-3/4 | 22 | 13 | 8 | 50-1/4 | 2, 3 or 4 | 186 |
| GS6 50 YRVIT 5 | 114 | .65 | 50 | 62,500 | 66 | 16 | 65 | 56-3/4 | 22 | 13 | 8 | 50-1/4 | 3 or 4 | 186 |
| GS6 75 YRVIT* | N/A | N/A | 74 | 80,000 | 86 | 12 | 66 | 57 | 25-1/2 | 15 | 16 | 50-1/4 | 3 or 4 | 245 |

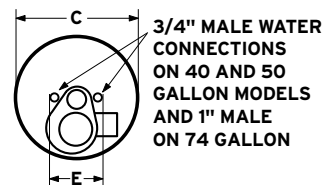
*74-gallon model is not FVIR construction

Propane Inputs: GS6 40 HBVIT, GS6 50 HBVIT, GS6 40 HBVIT 2, GS6 50 HBVIT 2: 40,000 BTU, GS6 40 HRVIT, GS6 50 HRVIT: 50,000 BTU, GS6 50 HRVIT 5: 55,000 BTU, GS6 75 HRVIT: 80,000 BTU

**R8=1", R12=1-1/2" and R16=2" foam capacity

When ordering Propane, change the Y to H in the model number (GS6 40 HBVIT)

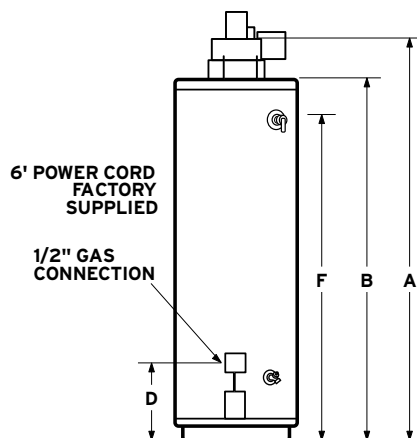
GS6 YBVIT 2 and GS6 50 YBVIT 2 Models are ENERGY STAR® Qualified



| MODEL NUMBER | BTU INPUT | MAXIMUM VENT DISTANCE (Total Equivalent Feet) | | |
|----------------|-----------|---|---------|---------|
| | | 2" Pipe | 3" Pipe | 4" Pipe |
| GS6 40 YBVIT | 40,000 | 40' | 120' | 160' |
| GS6 50 YBVIT | 40,000 | 40' | 120' | 160' |
| GS6 40 YBVIT 2 | 40,000 | 40' | 120' | 160' |
| GS6 50 YBVIT 2 | 40,000 | 40' | 120' | 160' |
| GS6 40 YRVIT | 50,000 | 40' | 120' | 160' |
| GS6 50 YRVIT | 50,000 | 40' | 120' | 160' |
| GS6 50 YRVIT 5 | 62,500 | N/A | 80' | 120' |
| GS6 75 YRVIT* | 80,000 | N/A | 30' | 100' |

2" & 3" elbows are equal to 5' of vent pipe. 4" elbows are equal to 8' of vent pipe.

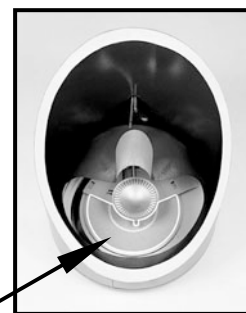
Important: Read and follow requirements shown in the Product Manual for Select Power Vent gas water heaters dealing with type, placement and length of vent pipe and vent termination, as well as clearances required to provide adequate combustion and proper ventilation.



Flammable Vapor Ignition Resistant (FVIR) Gas Water Heaters

Design meets American National Standards Institute standards (ANSI Z21.10.1 - 10.3 - CSA 4.1 - 4.3) that deal with the accidental or unintended ignition of flammable vapors, such as those emitted by gasoline.

Covered by four U.S. patents, FVIR gas water heaters feature a sealed combustion chamber with air intake screen and a fireproof Corderite flame arrestor built into the water heater base. Select® Power Vent water heaters are also equipped with a flammable vapor sensor, which automatically shuts down the blower, Intelli-Vent™ gas control and hot surface ignitor if the presence of flammable vapors is detected.



If flammable vapors accidentally enter the combustion chamber, the Corderite flame arrestor is designed so flames burn off the top surface and cannot escape down through the arrestor.

State Industries, Inc. reserves the right to make product changes or improvements without prior notice.

For more information on State® contact:
 State Water Heaters
 500 Tennessee Waltz Parkway, Ashland City, TN 37015
 800.365.0024 Toll-free USA
 www.statewaterheaters.com

SOLID.STATE.

