

# STORAGE TANKS

## State Large Volume Jacketed and Insulated Storage Tanks



ASME



(OPTIONAL)

CRN

MEETS OR EXCEEDS THE THERMAL EFFICIENCY  
AND/OR STANDBY LOSS REQUIREMENTS OF THE  
U.S. DEPARTMENT OF ENERGY AND CURRENT EDITION  
OF ASHRAE/IESNA 90.1

### ■ Limited Warranty Outlines

- **Glass-Lined, Cement, Epoxy:** If the tank should leak any time during the first five years, under the terms of the warranty, State Water Heaters will repair or replace the tank; installation, labor and handling extra.
- **Black Steel:** If the tank should leak on installation, under the terms of the warranty, State Water Heaters will repair or replace the tank; installation, labor and handling extra.
- **NOTE: This Outline Is NOT A Warranty.** For complete information, consult the written warranty or State Water Heaters. Warranty does not apply to product installed outside of the United States of America or its territorial possessions and Canada.

- **Sizes From 140 to 1,000 Gallons** – ASME code steel tanks are constructed of code material. For extremely severe or special applications, ASME code tanks are available in stainless steel or silicon bronze. Larger sizes, consult factory representative.
- **ASME Code Construction** – All tanks are constructed to the requirements of the ASME. ASME code tanks are available in 100, 125, 150 and 160 psi working pressures (125 psi working pressure - standard). Consult factory for ASME code tanks with greater or lesser working pressures, with special configurations or materials.
- **Insulation** – Entire tank is surrounded with high density fiber glass insulation to reduce costly heat loss; non-sagging and vermin-proof. To meet or exceed thermal efficiency and/or standby loss requirements of the U.S. Department of Energy and current edition of ASHRAE/IESNA 90.1.
- **Cabinet** – Heavy gauge steel with high quality powder coat paint provides additional insulating qualities for greater energy savings.
- **Linings and Coatings** – Each lining and coating has particular capabilities and limitations. Please consult the factory for recommendations on the uses of linings for specific applications. Thorough investigation on the service life of steel tanks with protective coatings or linings has led to the recommendations of the following linings:
  - **Glass-lined** – These are normally stocked tanks for water storage up to 180°F, with glass lining to prevent corrosion and addition of rust to water. The glass lining was developed over many years of ceramic research for a wide variety of conditions.
  - **Cement** – A special formulation of cement provides excellent corrosion protection. Available on 200 gallon and larger sizes. A manhole or handhole is included for application of cement lining.
  - **Epoxy** – The application of specially formulated epoxy makes this lining suitable for cold or hot water storage. A manhole or handhole is included for application of epoxy lining. Available on 200 gallon and larger sizes.
- **Cathodic Protection** – Glass-lined, cement and epoxy tanks are furnished with anodes designed for maximum protection.
- **Accessories** – Tanks will be supplied with the fittings located as indicated on the drawings unless specified otherwise. A manhole or handhole is included on cement or epoxy tanks. A manhole or handhole is optional on glass-lined tanks.

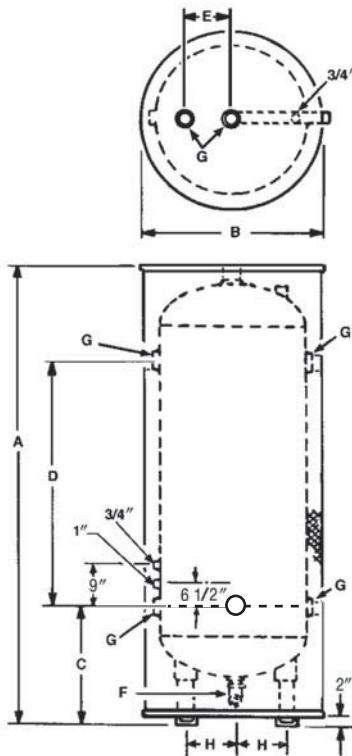
For more information on State® contact:  
State Water Heaters  
500 Tennessee Waltz Parkway, Ashland City, TN 37015  
800.365.0024 Toll-free USA  
www.statewaterheaters.com

**SOLID.STATE.**



# STORAGE TANKS

## State Large Volume Jacketed and Insulated Storage Tanks



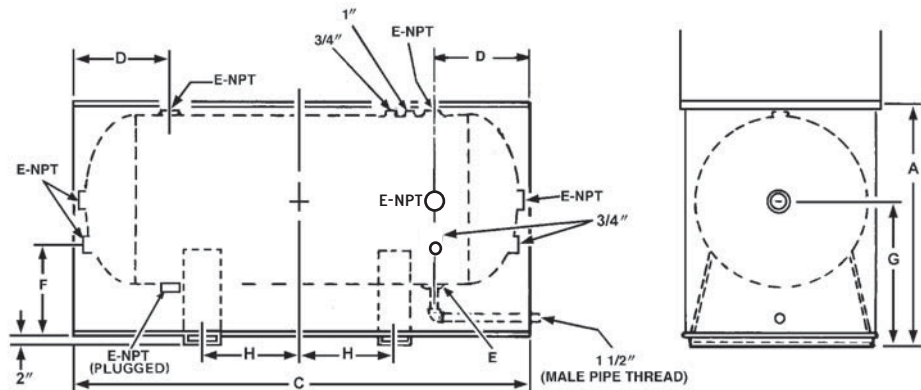
PVG 01400 OVTA125 thru PVG 10000 OVTA125  
Figure 1

### Suggested Specifications

Jacketed insulated ASME storage tank shall be State Water Heaters model \_\_\_\_\_. Capacity to be \_\_\_\_ gallons with enclosed insulation of sufficient thickness to meet or exceed thermal efficiency and/or standby loss requirements of the U.S. Department of Energy and current edition of ASHRAE/IESNA 90.1. Tank(s) shall be constructed and stamped according to ASME specifications for \_\_\_\_ psi working pressure. Optional (11" x 15 x 15 x 15 manhole, 4" x 6" handhole, or [2] 2" threaded) inspection opening(s) shall be supplied, if required. The tank to be constructed of carbon steel and shall be lined with \_\_\_\_\_ (glass, epoxy or cement). Tanks shall be equipped with the number and size of magnesium anode rod(s) sufficient to provide adequate protection for the tank lining. Tank(s) shall be \_\_\_\_\_ (vertical or horizontal design).

### CAUTION

All openings are shipped unplugged and unused. Openings must be plugged at time of installation except as noted.



PVG 02000 OHTA125 thru PVG 10000 OHTA125  
Figure 2

Model	Nominal Gallon Capacity	ASME	Standard Working Pressure	Approx. Ship. Wt.	Refer to Figure	Dimensions In Inches							
						A	B	C	D	E	F	G	H
<b>Vertical</b>													
PVG 01400 OVTA125	140	Yes	125	516	1	87	30	21 1/2	51	8	1 1/2	2 1/2	6 3/8
PVG 02000 OVTA125	200	Yes	125	612	1	83	36	22	45	10	1 1/2	2 1/2	7 3/4
PVG 02500 OVTA125	250	Yes	125	900	1	93	36	22	58	10	1 1/2	2 1/2	7 3/4
PVG 03500 OVTA125	350	Yes	125	1080	1	97	42	24 1/2	54	14	1 1/2	2 1/2	9 1/2
PVG 04000 OVTA125	400	Yes	125	1282	1	105	42	24 1/2	61	14	1 1/2	2 1/2	9 1/2
PVG 05000 OVTA125	500	Yes	125	1369	1	100	48	27	52	16	1 1/2	3	11 1/8
PVG 05000 OVSA125	500	Yes	125	1526	1	84	54	27 3/4	33 1/4	18	1 1/2	3	12 3/4
PVG 07500 OVTA125	750	Yes	125	2395	1	116	54	27 3/4	65 1/2	18	1 1/2	3	12 3/4
PVG 10000 OVTA125	1000	Yes	125	3320	1	150	54	27 3/4	97 1/2	18	1 1/2	3	12 3/4
<b>Horizontal</b>													
PVG 02000 OHTA125	200	Yes	125	790	2	41	36	77	16	2 1/2	11	23	16
PVG 02500 OHTA125	250	Yes	125	1000	2	41	36	90	16	2 1/2	11	23	16
PVG 03500 OHTA125	350	Yes	125	1370	2	47	42	93	17 1/2	2 1/2	10	26	22 1/2
PVG 04000 OHTA125	400	Yes	125	1476	2	47	42	99	17 1/2	2 1/2	10	26	26
PVG 05000 OHTA125	500	Yes	125	1448	2	53	48	94	21	3	11	29	19 1/8
PVG 05000 OHTA125	500	Yes	125	1540	2	59	54	79	22 3/4	3	12	32	11
PVG 07500 OHTA125	750	Yes	125	2575	2	59	54	111	22 3/4	3	12	32	27
PVG 10000 OHTA125	1000	Yes	125	3260	2	59	54	143	22 3/4	3	11	32	43

Inspection openings, i.e., handholes and manholes, are optional and are to be included with glass lined tanks only when specified.

Other tanks to 66" diameter and 3500 gallon are available on special order.

All openings Female Pipe Thread except as noted. "F" opening Male Pipe Thread on models "PVG 01400 OVTA125" thru "PVG 10000 OVTA125".

Optional on "PVG 02000 OHTA125" thru "PVG 10000 OHTA125" models: handhole or 11" x 16" manholes, additional openings & heating coils.

In keeping with our policy of continuous product improvement, specifications are subject to change without prior notice.

For more information on State® contact:  
State Water Heaters  
500 Tennessee Waltz Parkway, Ashland City, TN 37015  
800.365.0024 Toll-free USA  
www.statewaterheaters.com

**SOLID.STATE.**

